

# RASHMI HEATERS PVT. LTD.

( An ISO 9001 : 2008 Certified Company )

**Tubular Heating Elements for all fluids**



[www.rashmiheaters.com](http://www.rashmiheaters.com)



**CIMFR**



## ABOUT OURSELVES

Rashmi Heaters Pvt. Ltd. is a leading center for development, design and manufacturing of electric tubular heaters and heating systems. We have been successfully supplying wide range of special heating elements & systems as per customer's requirement, since 1991.

Our company started its operations with technical knowhow from ELPRO INTERNATIONAL LTD. Over the last few years we have become one of the largest manufacturers of customized heating systems known for the quality of our products. We view our role from understanding customer application, designing world class heating systems to manufacturing, using latest and most modern machines and equipments.

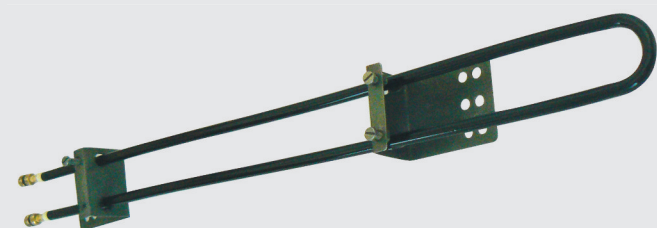
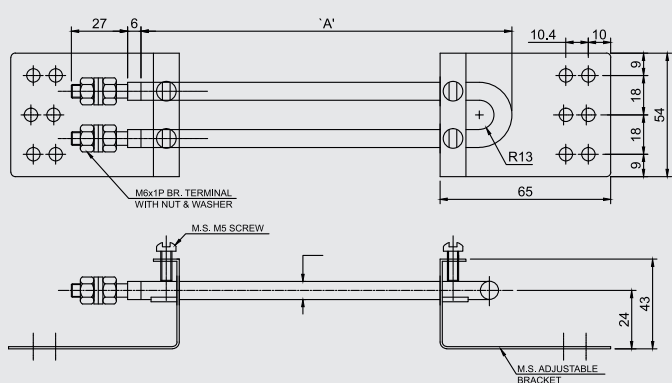
To maintain the high quality of our product the major input material like Incoloy / SS / Titanium tube, Magnesium Oxide etc. are being imported by us from trusted sources.

## OUR STRENGTHS

- Manufacturers of Heating elements in various sheath material like Incoloy 800, Incoloy 840, SS-304, SS-316, SS-321, Titanium, Lead Covered etc. in various tube diameters ranging from 8mm, 10.5 mm, 12.7 mm & 16mm.
- The maximum length of the Heating element that can be manufactured is around 7 mtr.
- Manufactured & supplied a single assembly of 325 KW.
- We can supply heaters with CE marking ; terminal box with IP-55 enclosures and Flame Proof enclosures (with temperature class certification).
- We supply the Heating elements for almost every Industrial application like air, water, alkaline, degreasing, phosphating, anodizing, blackodising, electroplating & rinse water. Heater assemblies with flameproof / explosion proof terminal box. The applications also include duct oven, gases & emulsions, metal finishing & chemical industries. Industrial - commercial comfort, Defense AC application, process heating equipments, furnace elements, Oil preheating etc.
- We can design & supply heating systems suitable for application temperature 500<sup>o</sup>c

## STANDARD HEATING ELEMENTS

### U-SHAPED AIR HEATING ELEMENTS



#### U-SHAPED AIR HEATING ELEMENTS

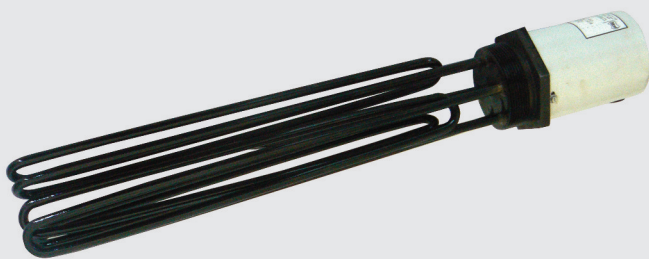
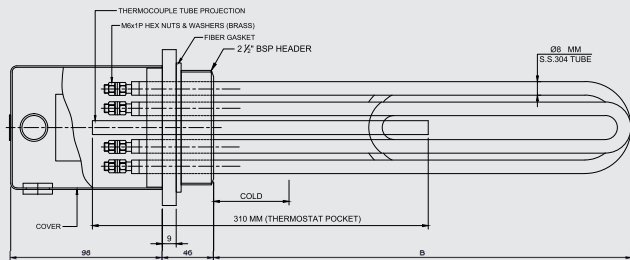
S.S.304 CAT.NO.	INCOLOY CAT.NO.	'A' LENGTH IN mm	RATING & VOLTAGE	INCOLOY/SS AIR HEATING ELEMENTS CAN BE SUPPLIED WITH 28 MM DIAMS NICKEL PLATED OR SS FINIS.
RH-925982	RH-921662	610 (24")	1000W / 230V	
RH-925983	RH-921663	762 (30")	1000W / 230V	
RH-925984	RH-921664	762 (30")	1500W / 230V	
RH-925985	RH-921665	990 (39")	1500W / 230V	
RH-925986	RH-921666	990 (39")	2000W / 230V	
RH-925987	RH-921667	457 (18")	750W / 230V	
RH-925988	RH-921668	254 (10")	500W / 250V	
TUBE DIA 8 MM & COLD PORTION 50 MM				

#### U-SHAPED INCOLOY AIR HEATING ELEMENTS WITH 150 MM COLD PORTION

CAT NO.	'A' LENGTH IN mm	RATING & VOLTAGE
RH-3128	712 (28")	1000W / 230V
RH-3129	863 (34")	1000W / 230V
RH-3130	863 (34")	1500W / 230V
RH-3131	1092 (43")	1500W / 230V
RH-3132	1092 (43")	2000W / 230V
RH-3133	558 (22")	750W / 230V
RH-3134	355 (14")	500W / 250V



## OIL HEATING ELEMENTS



OIL HEATING ELEMENTS				
CAT.NO.	RATING	VOLTAGE	'B' LG IN mm	REMARKS
RH-916101	1 KW	230V	411	Single emement
RH-916102	1.5 KW	230V	411	Single emement
RH-916103	2 KW	230V	411	Twın emement
RH-916104	3 KW	230V/400V	411	Three emement
RH-916105	4 KW	230V/400V	548	Three emement
RH-916106	4 KW	230V/400V	411	Three emement
RH-916107	5 KW	230V/400V	550	Three emement
RH-916108	6 KW	230V/400V	575	Three emement
RH-916109	9 KW	230V/400V	710	Three emement

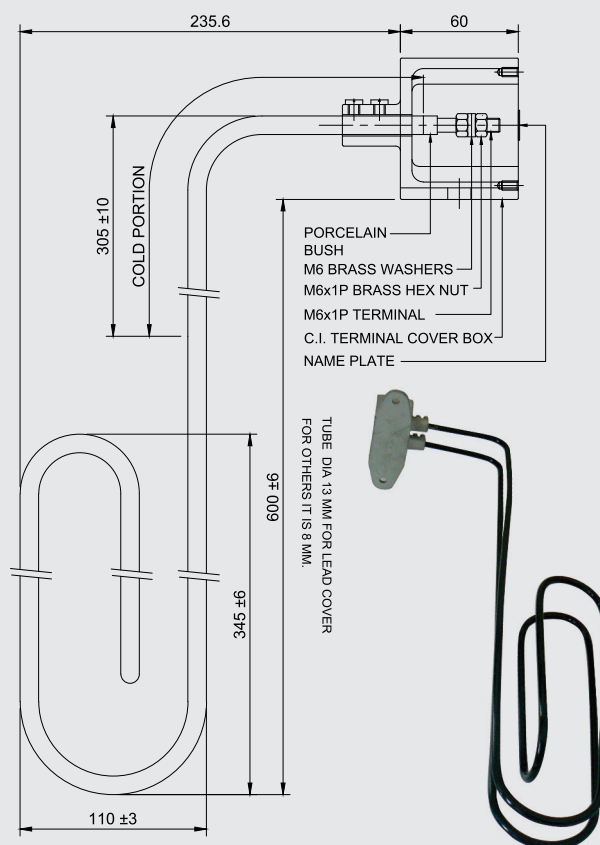
CAST IRON THREADED FLANGE SIZE FOR ABOVE - 2 1/2" BSP

## ALKALINE / TITANIUM (CHEMICAL) / LEAD COVERED HEATING ELEMENTS

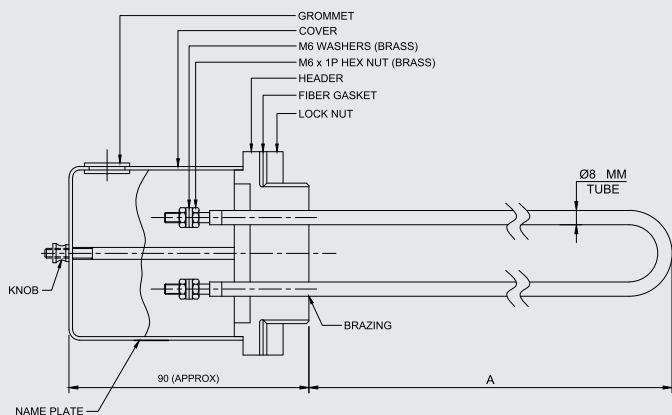
### ALKALINE /TITANIUM (CHEMICAL)/ LEAD COVERED HEATING ELEMENTS

CAT NO.	SHEATH	APPLICATION	WATTS	VOLTAGE
921612	S.S.304	ALKALINE	3000W	250V
* 921613	S.S.304	ALKALINE	2000W	230V
922719	TITANIUM	CHEMICAL	3000W	250V
922981	LEAD(SS)	ACID	3000W	250V

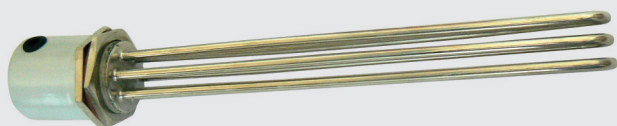
\* WILL BE MANUFACTURED ON REQUEST



## INDUSTRIAL WATER HEATING ELEMENTS



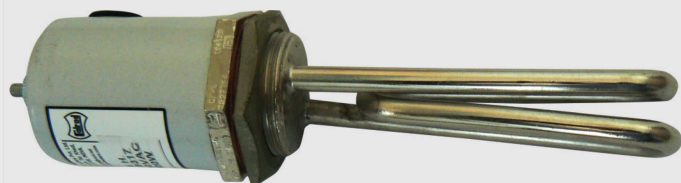
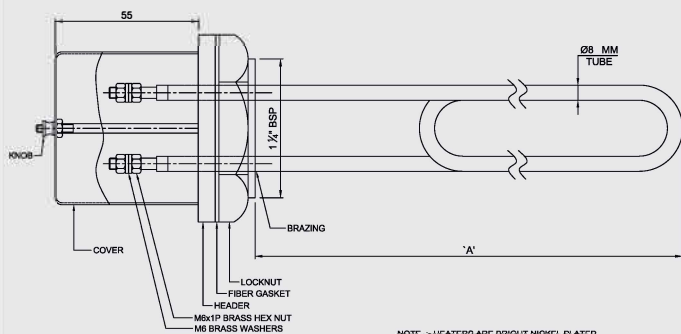
NOTE :- HEATERS ARE BRIGHT NICKEL PLATED



### INDUSTRIAL WATER HEATING ELEMENTS

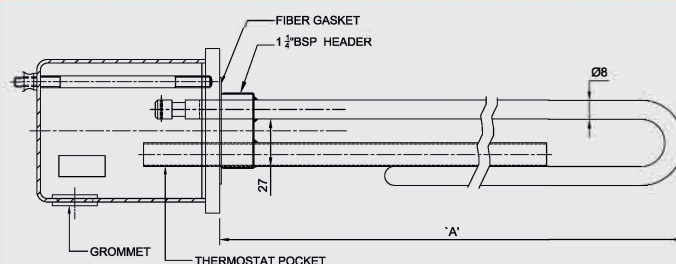
CAT.NO.	'A' LENGTH IN mm	RATING		FLANGE SIZE	NO. OF ELEMENTS
		WATTS	VOLTAGE		
RH-918201	220	2000W	230V	1 1/4"	Two
RH-918202	220	2000W	230V	1 1/2"	Two
RH-918203	280	3000W	230V	1 1/4"	Two
RH-918204	220	3000W	230V/400V	1 1/2"	Three
RH-918205	260	4000W	230V/400V	2"	Three
RH-918206	320	5000W	230V/400V	2"	Three
RH-918207	380	6000W	230V/400V	2"	Three
RH-918208	590	9000W	230V/400V	2 1/2"	Three

## WATER HEATING ELEMENTS



WATER HEATING ELEMENTS			
CAT.NO.	WATTS	VOLTAGE	DEPTH OF IMMERSION LG. 'A' IN mm
RH-919201 / 919317	1000W	230V	230/120 MM
RH-919202 / 919318	1500W	230V	230/150 MM
RH-919203 / 919315	2000W	230V	325/200 MM
RH-919204 / 919316	3000W	230V	425/325 MM
NOTE:- CAN ALSO BE SUPPLIED WITHOUT CAP & CHECKOUT			

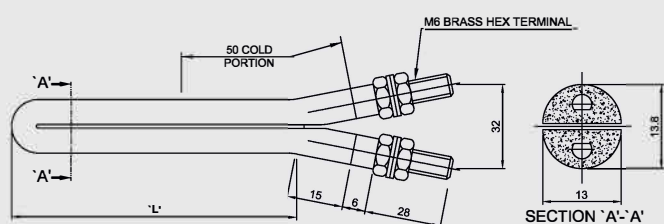
## HEATING ELEMENTS FOR SOLAR HEATER



### HEATING ELEMENT FOR SOLAR HEATER

DRG. NO	RATING	VOLTS	COLD LENGTH	DEPTH 'A'
RH-347	2 KW	230 V	50 MM	267 MM
RH-499	3 KW	230 V	50 MM	267 MM
RH-708	2 KW	230 V	40 MM	228 MM
RH-1021	3 KW	230 V	150 MM	367 MM
NOTE :- HEATERS ARE BRIGHT NICKEL PLATED				

## D-TYPE HEATING ELEMENTS



CAT NO.	RATING	VOLTAGE	DIM 'L'	EQUIVALENT INCH
D 450 W 06	450 W	240V	150 MM	(6")
D 550 W 08	550 W	250V	203 MM	(8")
D 550 W 09	550 W	240V	229 MM	(9")
D 600 W 10	600 W	250V	254 MM	(10")
D 750 W 11	750 W	250V	279 MM	(11")
D 750 W 12	750W	250V	305 MM	(12")
D 100 K 13	1000 W	240V	330 MM	(13")
D 100 K 14	1000 W	240V	355 MM	(14")
D 100 K 16	1000W	240V	406 MM	(16")
D 10 K 18	1000 W	240V	457 MM	(18")
D 15 K 18	1250 W	240V	457 MM	(18")
D 15 K20	1500W	240V	508 MM	(20")
D 10 K 20	1000 W	240V	508 MM	(20")
D 10 K 24	1000 W	240V	610 MM	(24")
D 15 K 24	1500 W	240V	584 MM	(24")
D 20 K 29	2000 W	240V	737 MM	(29")
D 20 K 31	2000 W	240V	787 MM	(31")
D 20 K 36	2000 W	240V	914 MM	(36")
D 25 K 39	2500 W	240V	990 MM	(39")
NOTE: HEATERS WITH OTHER RATING AND SIZES CAN BE MADE AS PER ORDER				

**RASHMI HEATERS PVT. LTD.**

Regd. Office & Works : 118/1, Alandi-Markal Road,  
Village Dhanore, Taluka Khed, District - Pune 412105,  
Maharashtra, India.  
Mob.: +91 - 98229 46344 / +91 - 98229 10124  
Email. : sales@rashmiheaters.com  
marketing\_design@rashmiheaters.com